





**Contact : Andres Garcia Suarez**  
**EMAIL: [ags@morethanlightme.com](mailto:ags@morethanlightme.com)**  
**Whatsapp/MOB/WECHAT: +971508396928**  
**MORE THAN LIGHT ME**



# OUTDOOR LED LIGHTING SOLUTIONS

*Product Catalogue*

## CERTIFICATE OF HONOR

### Ideas for Green Life

MORE THAN LIGHT ME FZCO ., is an innovative and new energy tech enterprise which focuses on researching & development, manufacturing, OEM order processing and brand operation of solar lights.

These years our R&D team is devoted to develop new material, new design, high tech solar light products all the time, high-end quality oriented, and with the latest technology such as infrared body sensor technology, light sensor technology etc..

Product range covers intelligent solar street lights, solar courtyard/landscape lights, remote control led lights, outdoor portable solar lights, solar home system and other solar products, with unique fashion appearance, high quality, energy saving, and environmental protection features, has obtained more than 50 patents on design and technology, and some certificates such as China energy saving certification, SGS, BV, ITS approvals and CE, ROHS, FCC, give more competitive advantages to our distributors and agents.

Insisting on the operation principle of integrity, win-win, innovation since company was built which makes us stand out from the competition, Sparing no effort to support welfare undertaking to insufficient electricity supply area like Africa, South America, and other areas for over 5 years help us gain a good social reputation, high quality, the most cost-effective price, responsible and efficient after service help us win the broad market of Europe, America, mid east, southeast Asia, south America etc.

We're always working hard to bring the light to every corner all over the world, power our life from the sun, and shoulder the mission of environmental protection.

**Make the best solar lights over the world.**

## SHOWROOM



## SOLAR STREET LIGHTS SERIES



## ELS-E340 SERIES OXIDIZED ALUMINUM ALLOY

- \* Monocrystal Silicon Solar Panel
- \* Smart COEUS Technology
- \* Adjustable Bracket
- \* A+ Grade LiFePo4 Battery
- \* Super Bright Led 160-210LM/W
- \* The Hybrid Technology is Available





# ELS-3 SERIES OXIDIZED ALUMINUM ALLOY

- \* Monocrystal Silicon Solar Panel
- \* Smart COEUS Technology
- \* Lithium Battery
- \* Microwave Sensor ,Indicator light
- \* Super Bright Led 160LM/W
- \* The Hybrid Technology is Availabe

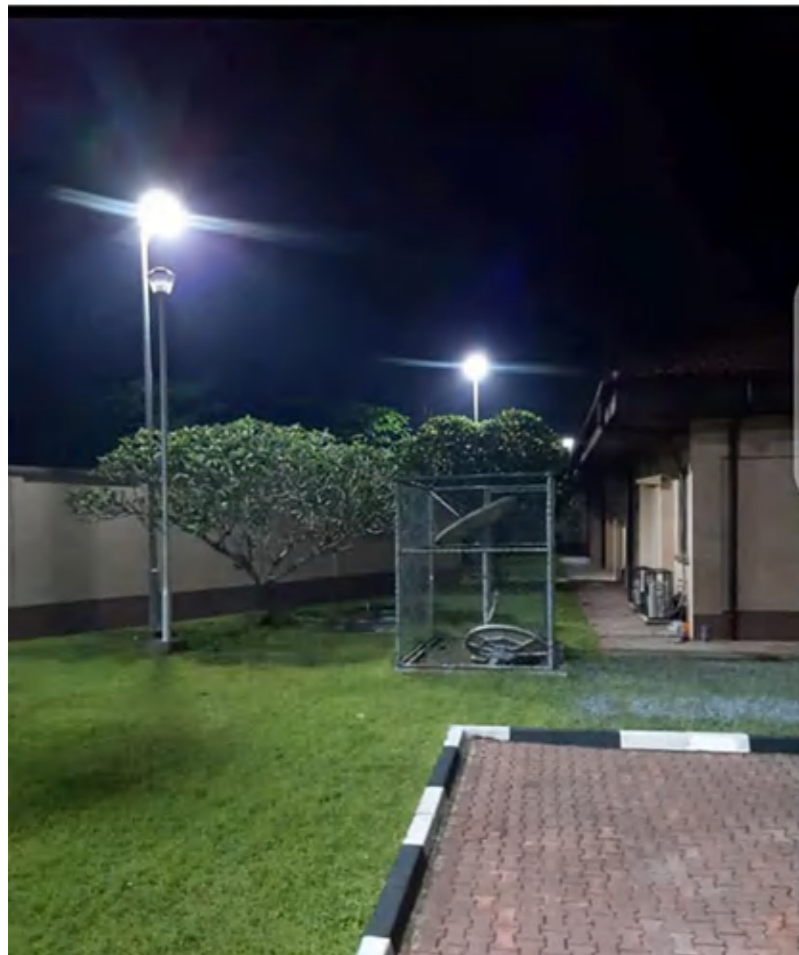


LOGO display

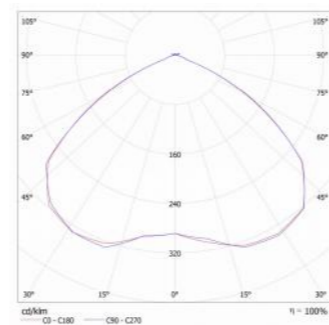


Patent No.:ZL 2018 2 0300038.4



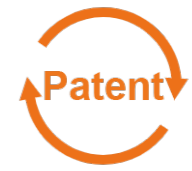


Luminance distribution



## ELS-3P SERIES OXIDIZED ALUMINUM ALLOY

- \* Monocrystal Silicon Solar Panel
- \* Smart COEUS Technology
- \* Lithium Battery
- \* PIR Motion Sensor
- \* Super Bright Led 160LM/W
- \* The Hybrid Technology is Available



Patent No.:ZL 2018 2 0300038.4

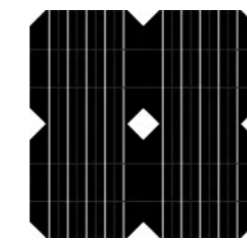




## ELS-DP SERIES

### Double sided adjustable lamp Solar Parking Lot light

- \* Monocrystal Silicon Solar Panel
- \* Double Sided Adjustable Lamp Head
- \* A+ Grade LiFePo4 Battery
- \* 5hrs High Light +Dim 20%
- \* Super Bright Led 160-210LM/W



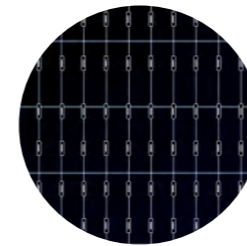




## ELS-DP SERIES BIFACIAL SOLAR PANEL



- \* Bifacial Monocrystal Silicon Solar Panel ,the efficiency will be up 21%
- \* A+ Grade LiFePo4 Battery
- \* Smart AI Controller
- \* Solar panel rotatable & LED array adjustable
- \* Super Bright Led 160-210LM/W
- \* The Hybrid Technology is Availabe

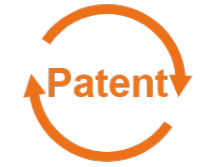




# ELS-07C/ELS-16C/ELS-18C

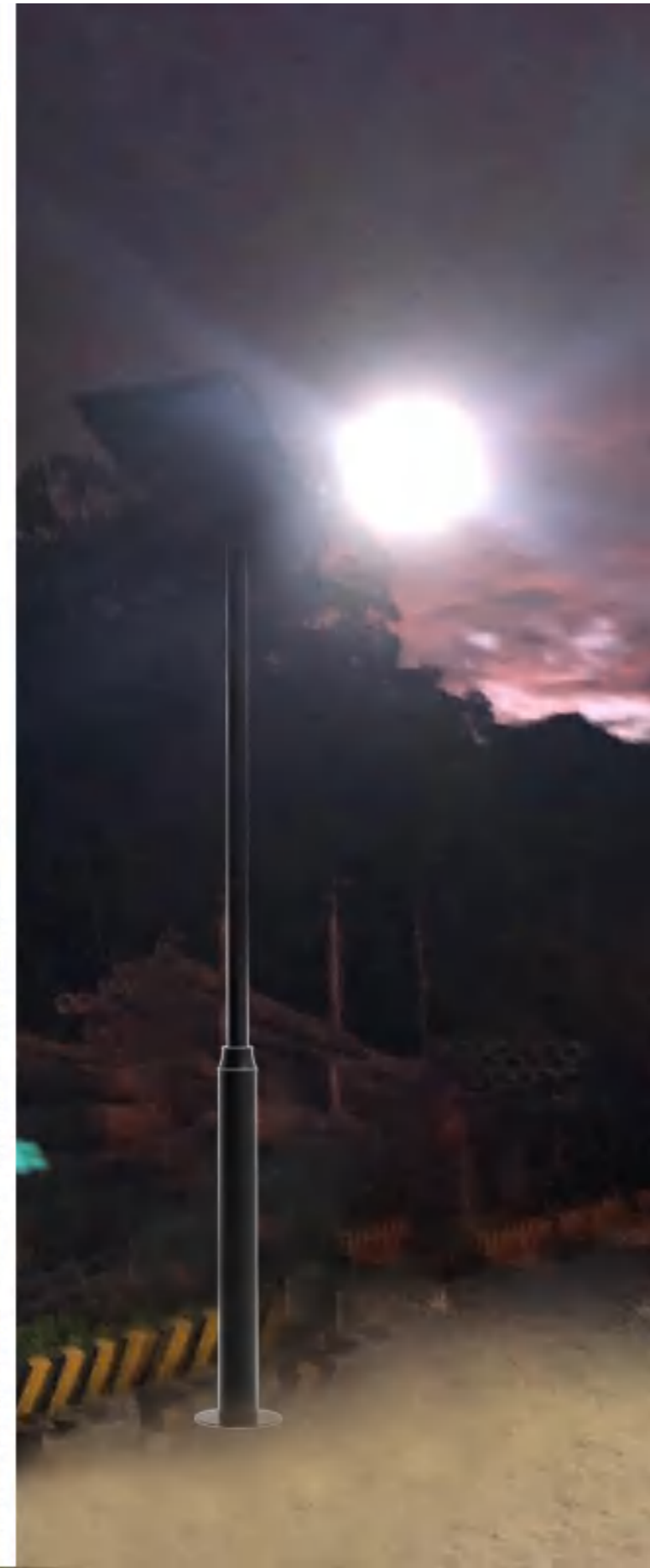
## OXIDIZED ALUMINUM ALLOY

- \* Monocrystal Silicon Solar Panel
- \* High Compact , military standard design
- \* Super Bright Led 160LM/W
- \* Rotatable Bracket
- \* The Hybrid Technology is Availabe



Patent No.:ZL 2014 2 0860155.8





## ELS-410BR/ ELS-412BR/ELS-416BR

### OXIDIZED ALUMINUM ALLOY

- \* Monocrystal Silicon Solar Panel
- \* High Compact , military standard design
- \* Super Bright Led 160LM/W
- \* Rotatable Bracket
- \* The Hybrid Technology is Availabe



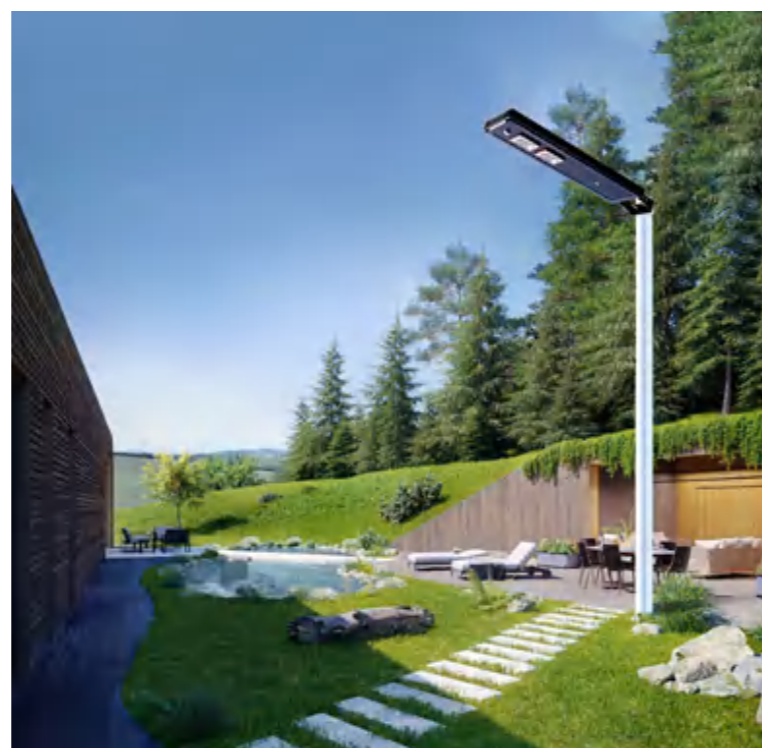
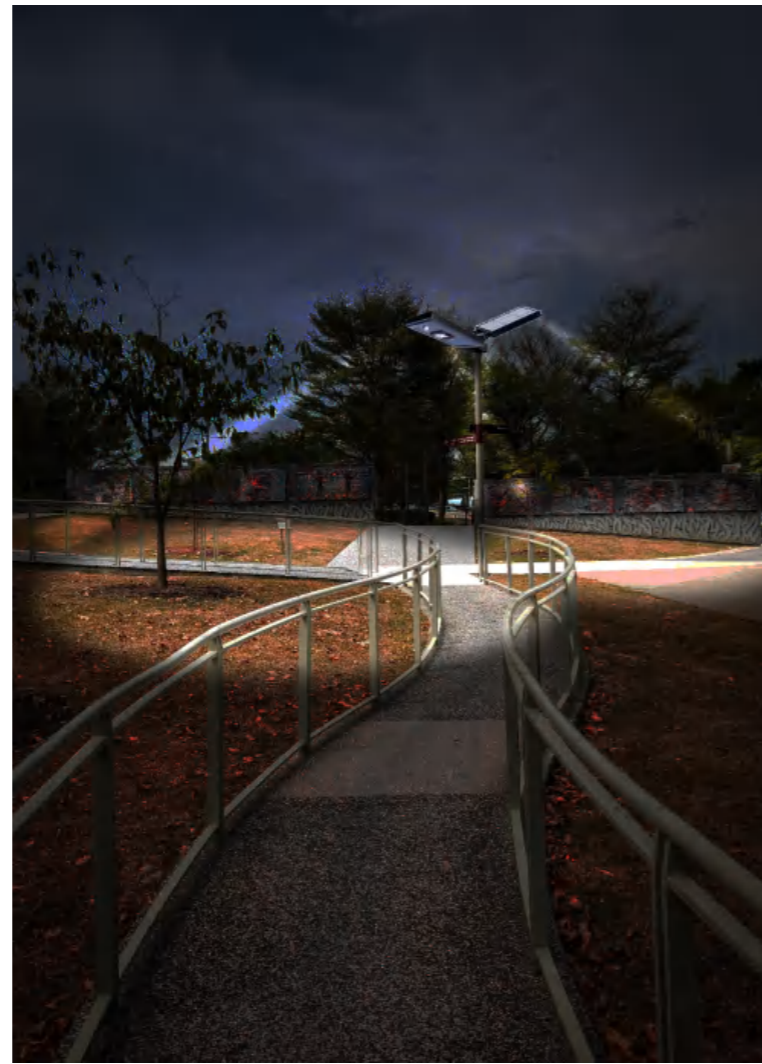


On the pole

TWO INSTALLATION WAY



On the wall

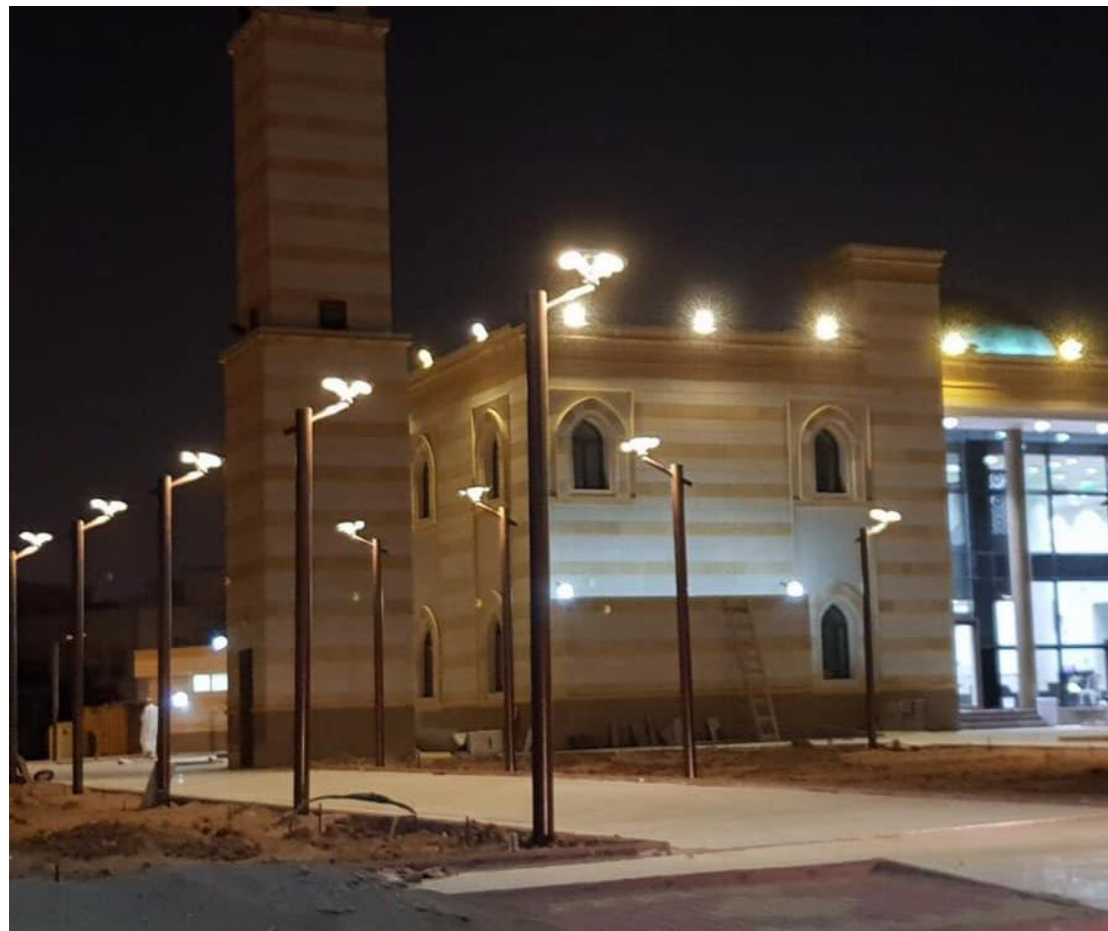


# SGL-05/SGL-05Pro

## SOLAR COURTYARD STREET LIGHT

- \* Monocrystal Silicon Solar Panel
- \* PIR Motion Sensor
- \* Wall-mounted / Pole-mounted is Available
- \* Super Bright Led 160LM/W
- \* Aluminum Alloy Material





# ELS-30AI

## MODERN DESIGN SMART AI

- \* Aluminum Alloy Material
- \* Both APP Control or Remote Control
- \* Adjustable With Warm White ,Cool White And 16 different landscape color
- \* Solar cell :Monocry stalline silicon
- \* Battery: LiFePo4 battery
- \* The Hybrid Technology is Availabe



Patent No.:ZL 2018 3 0404231.8

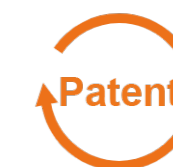




# ELS-30RC

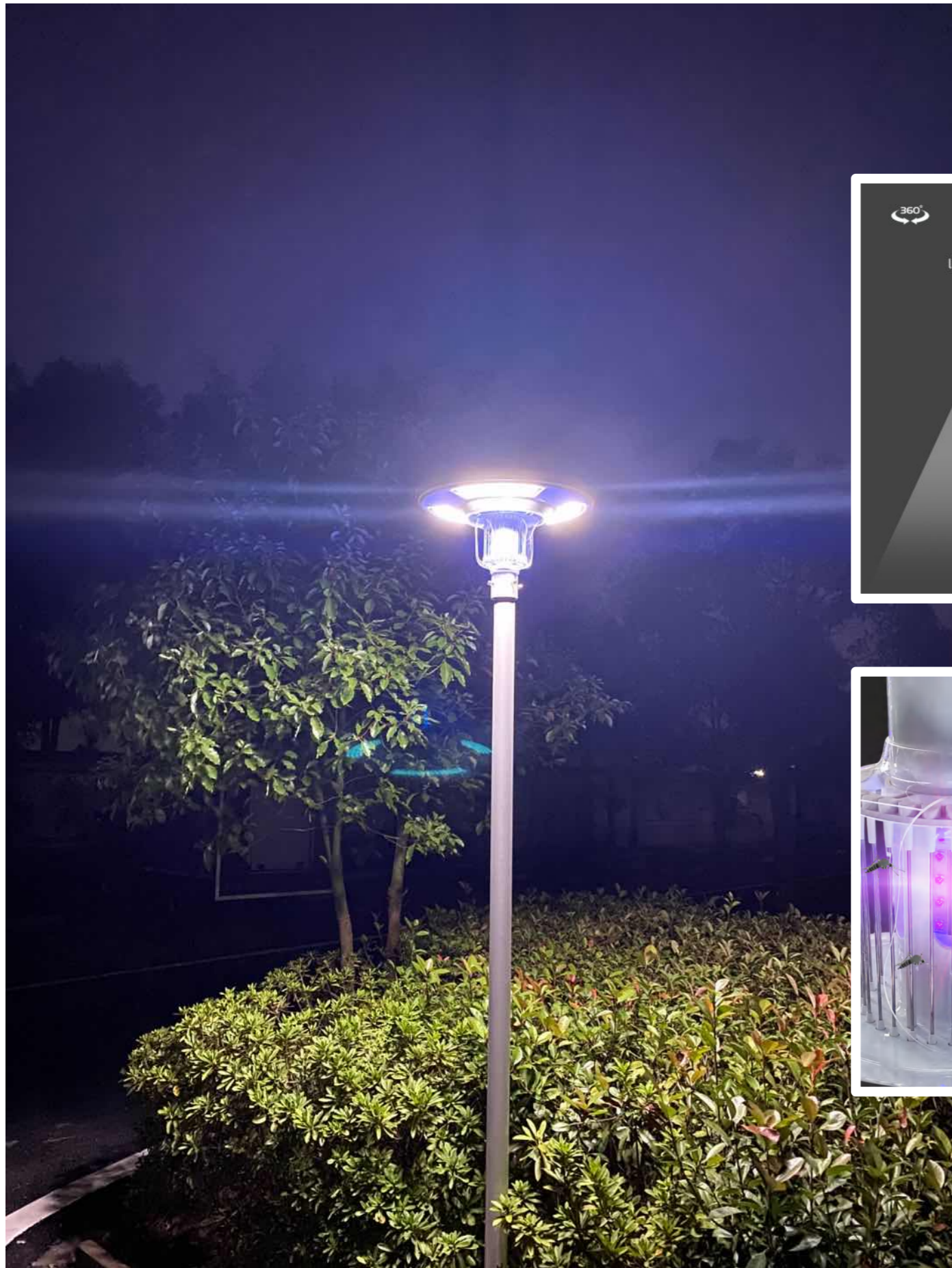
## MODERN UFO DESIGN

- \* Aluminum Alloy Material
- \* Remote Control
- \* 16 Different Landscape color & Flashing Mode
- \* Battery: Lithium Battery
- \* The Hybrid Technology is Available



Patent No.: ZL 2018 3 0404231.8





# ELS-30K

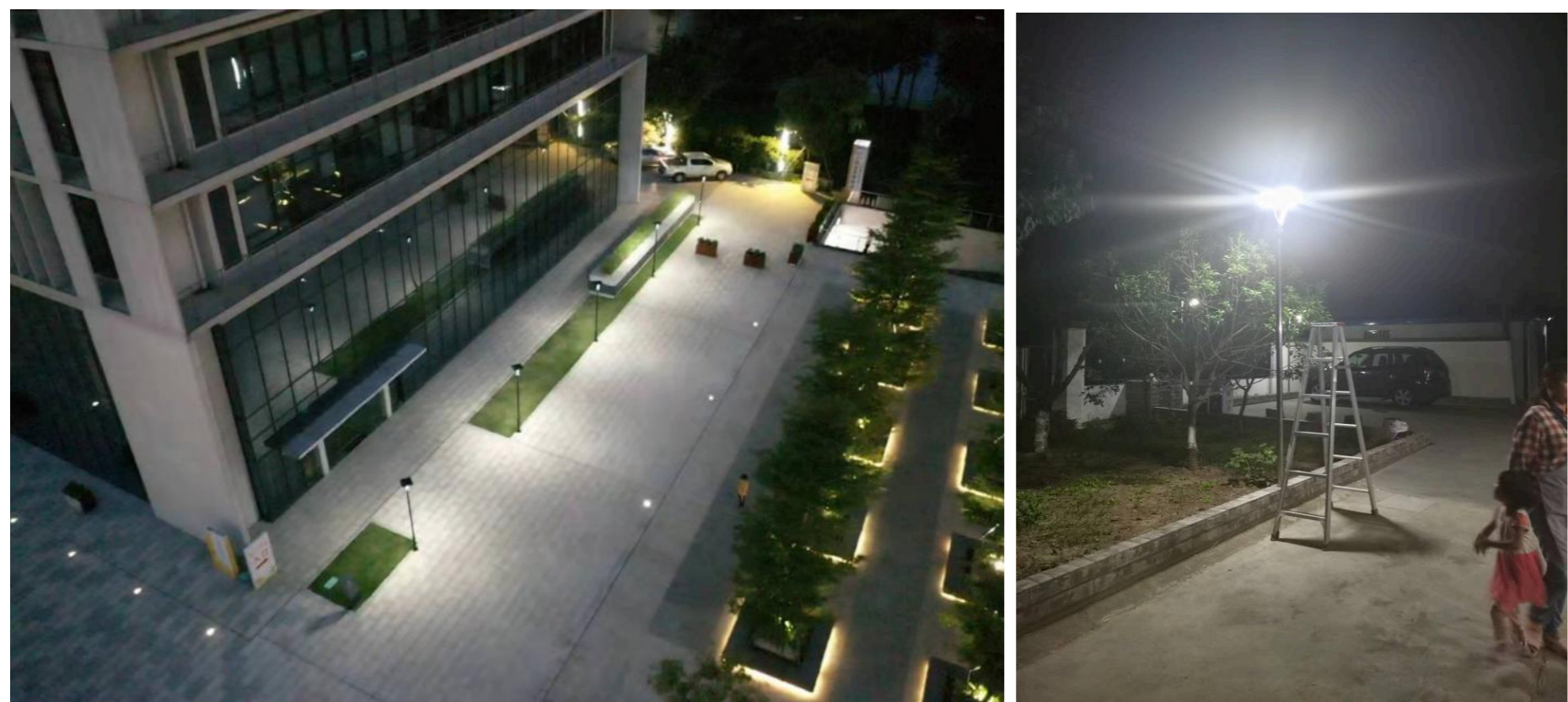
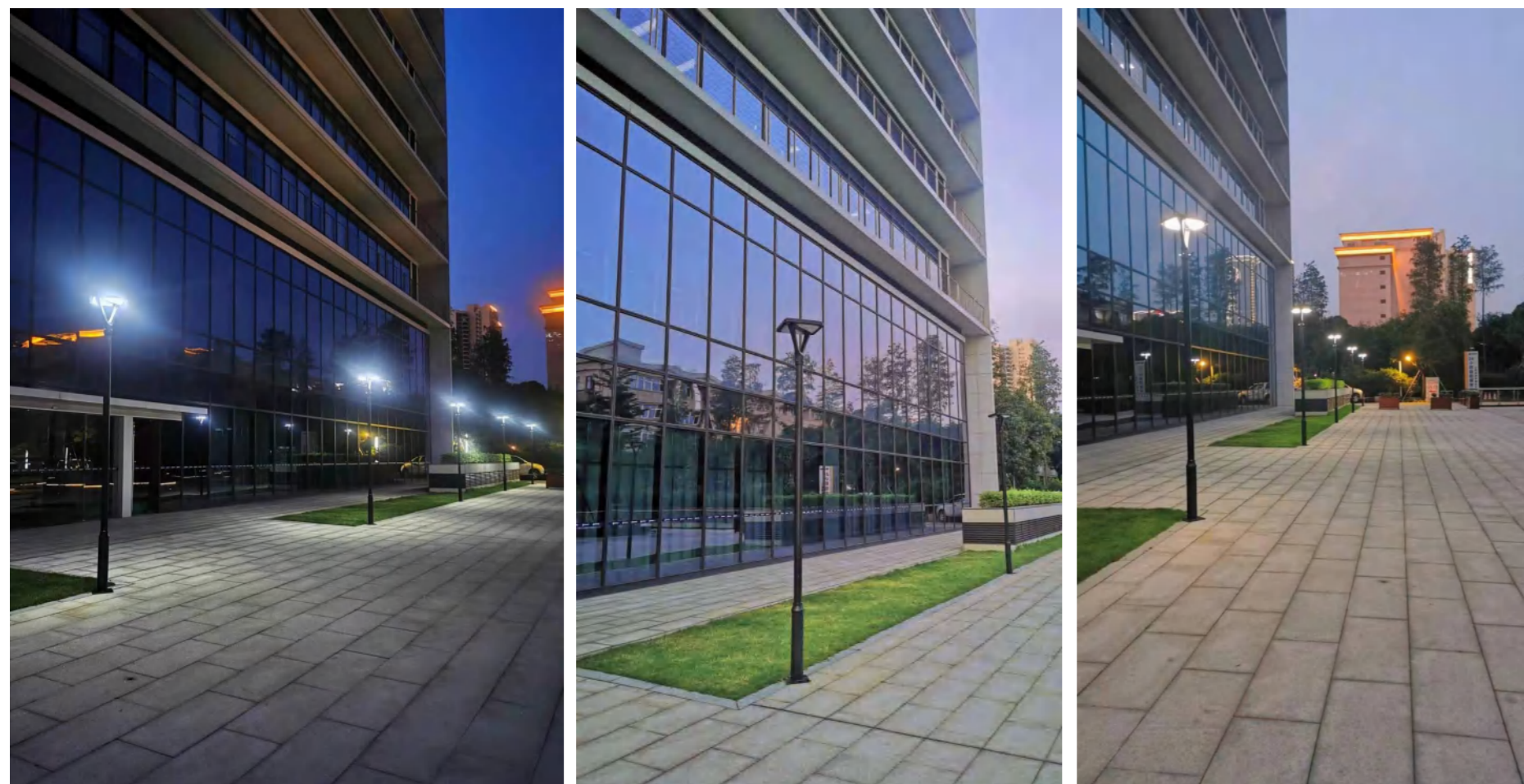
## SOLAR PLAZA LIGHT WITH INSECTICIDAL LAMP

- \* Monocrystal Silicon Solar Panel
- \* 9W UV Lamp Mosquito Killer Function
- \* Lithium Battery
- \* Super Bright Led 160LM/W
- \* Remote Control With 3 Lighting Modes



Patent No.:ZL 2018 3 0403788.X





# ELS-30SQ

## MODERN DESIGN SMART

- \* Die-cast Aluminum
- \* LED :3000K /4000K / 6000K
- \* Battery: LiFePo4 Battery
- \* Constant Lighting
- \* Size : 400\*400\*H420 MM







# ELS-300S MODERN DESIGN SMART

- \* Die-cast Aluminum UFO Design
- \* Warm White / Cool White
- \* Battery: LiFePo4 Battery
- \* Size : 700\*520\*665 MM



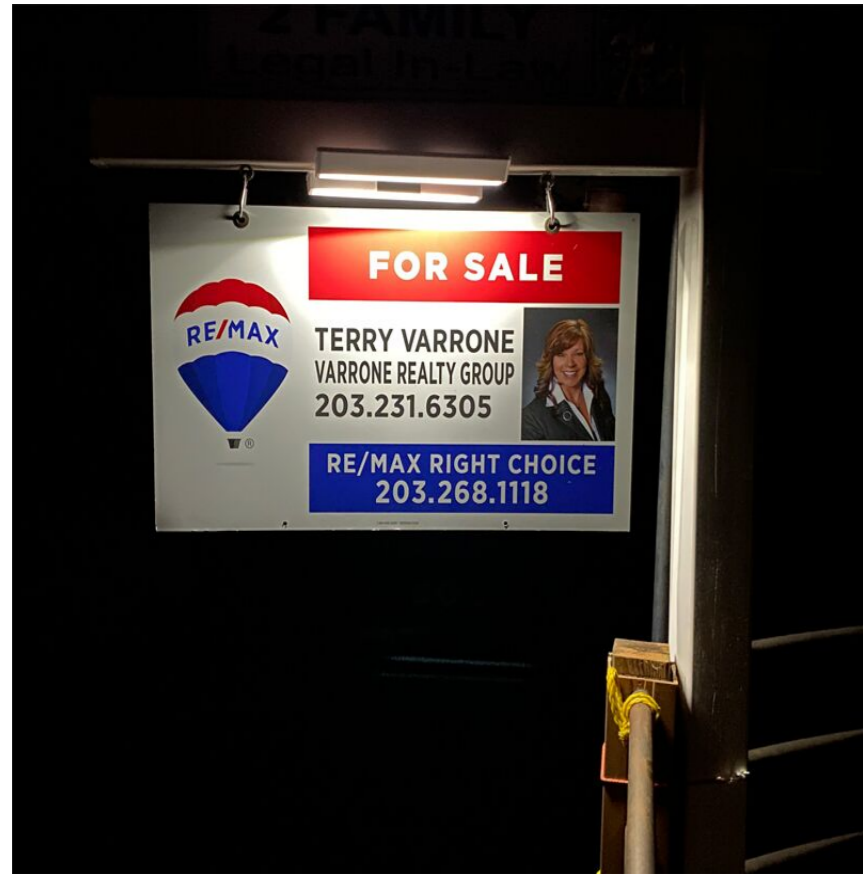
Cool White



Warm White



## SOLAR BILLBOARD LIGHTS SERIES



# SSL-01

## SOLAR SIGNBOARD LIGHTS

- \* Material: ABS +PC
- \* Battery: Rechargeable Li-ion Battery
- \* Working Temperature :-25°C to 65°C IP65
- \* Application :Real Estate Sign, Signage, Retail shopfront Brand
- \* COEUS Technology which lighting 100hours after charged



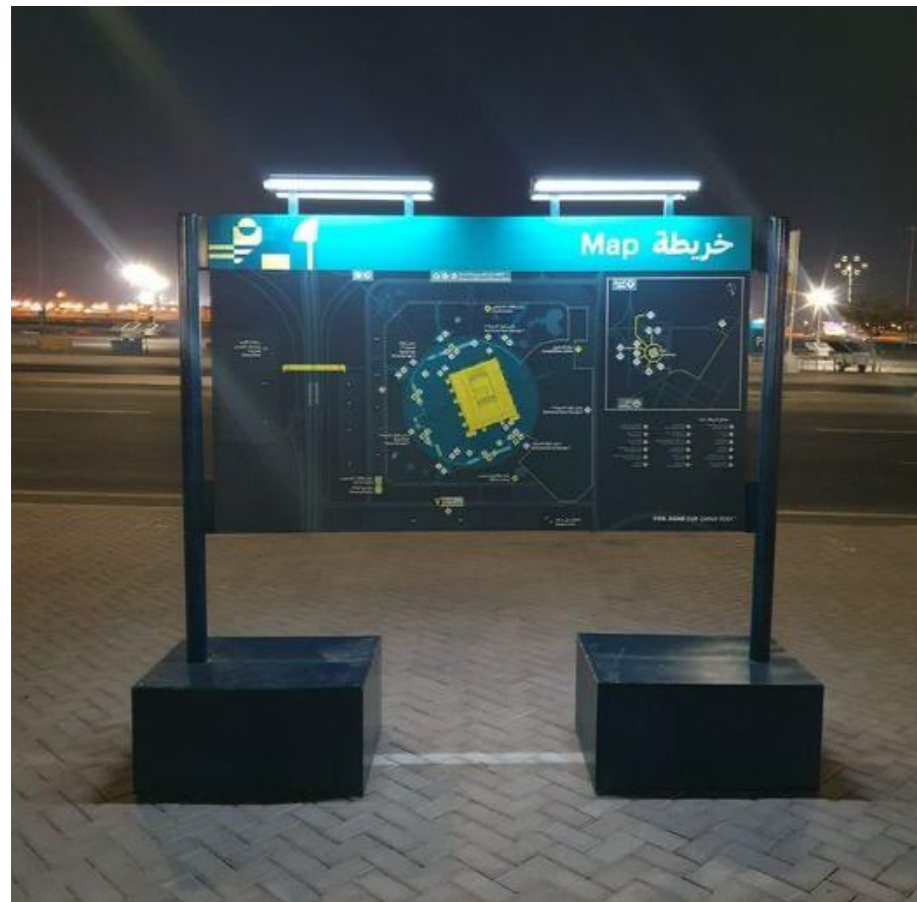
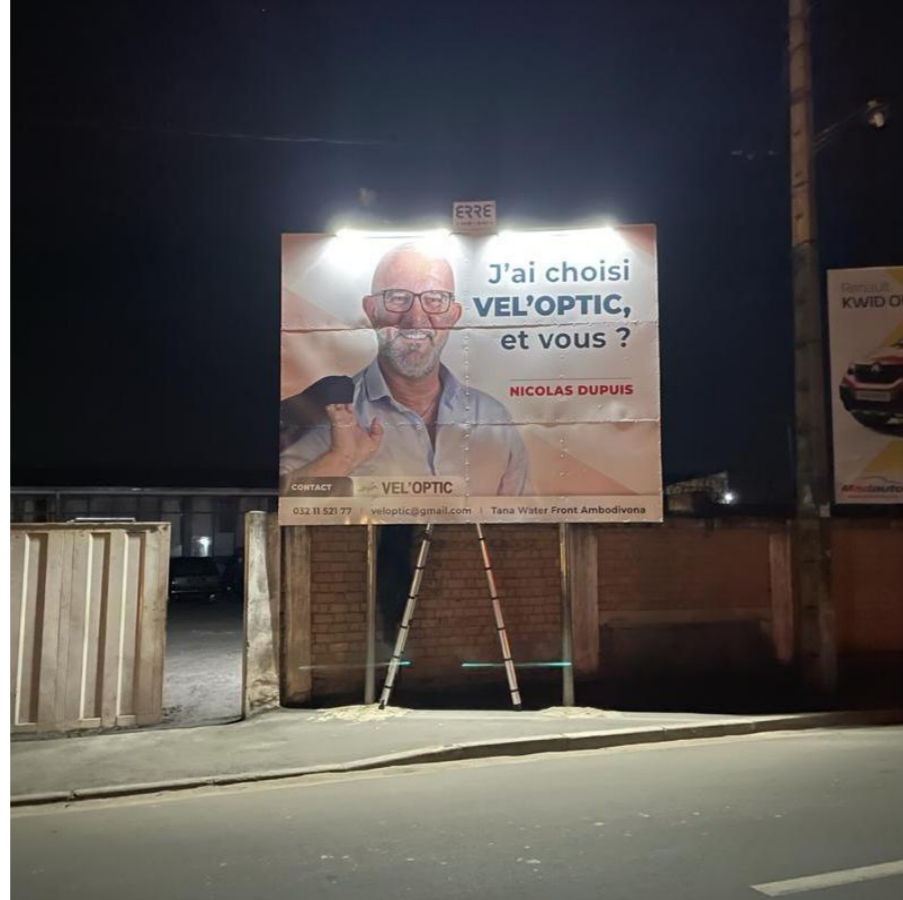
### TWO LIGHT COLORS FOR CHOOSING



Patent No.: 2020308088089



LED power	Color temperature
160lm/w	3000K / 6000K



SSL-04A/B/C

## INTEGRATED ALUMINUM SOLAR BILLBOARD LIGHTS

- \* Material: Aluminum Alloy+ PC
- \* Solar Panel: Glass Laminated Technology
- \* Battery: Rechargeable Li-ion Battery
- \* Working Temperature : -25°C to 65°C IP65
- \* Application: Commercial Billboards, Transport Maps and Guides etc
- \* Size :300mm ,600mm and 1200mm available



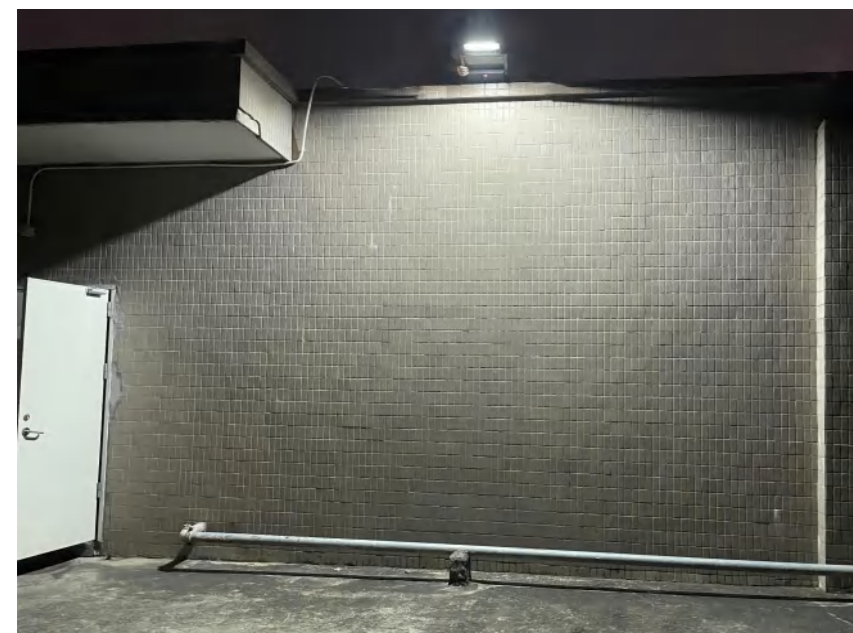
Patent No.:ZL 2018 2 1188843.9



LED power	Color temperature
160lm/w	3000K / 6000K



**Solar** billboard flood lights  
High brightness



## SSL-05PN1

### SUPER POWER SOLAR ADVERTISING LIGHT

- \* Material: Aluminum Alloy+PC
- \* Up or Down Flood Light
- \* Battery: Rechargeable LiFePO4 Battery /Lithium Battery
- \* Rotatable Bracket for Led/Solar Panel
- \* LCD Battery display



High capacity battery



LED power	Color temperature	Irradiation area
20W	3000K / 6000K	80-100m <sup>2</sup>





## SSL-05PN2

### SUPER POWER SOLAR ADVERTISING LIGHT

- \* Material: Aluminum Alloy+PC
- \* Monocrystal Silicon Solar Panel
- \* LiFePO4 Battery / Lithium Battery Is Available
- \* 2 Lamps with 502MM Bracket
- \* LCD Battery Display
- \* OEM Lighting Modes



LED power	Color temperature	Irradiation area
40W	3000K / 6000K	100-150m <sup>2</sup>



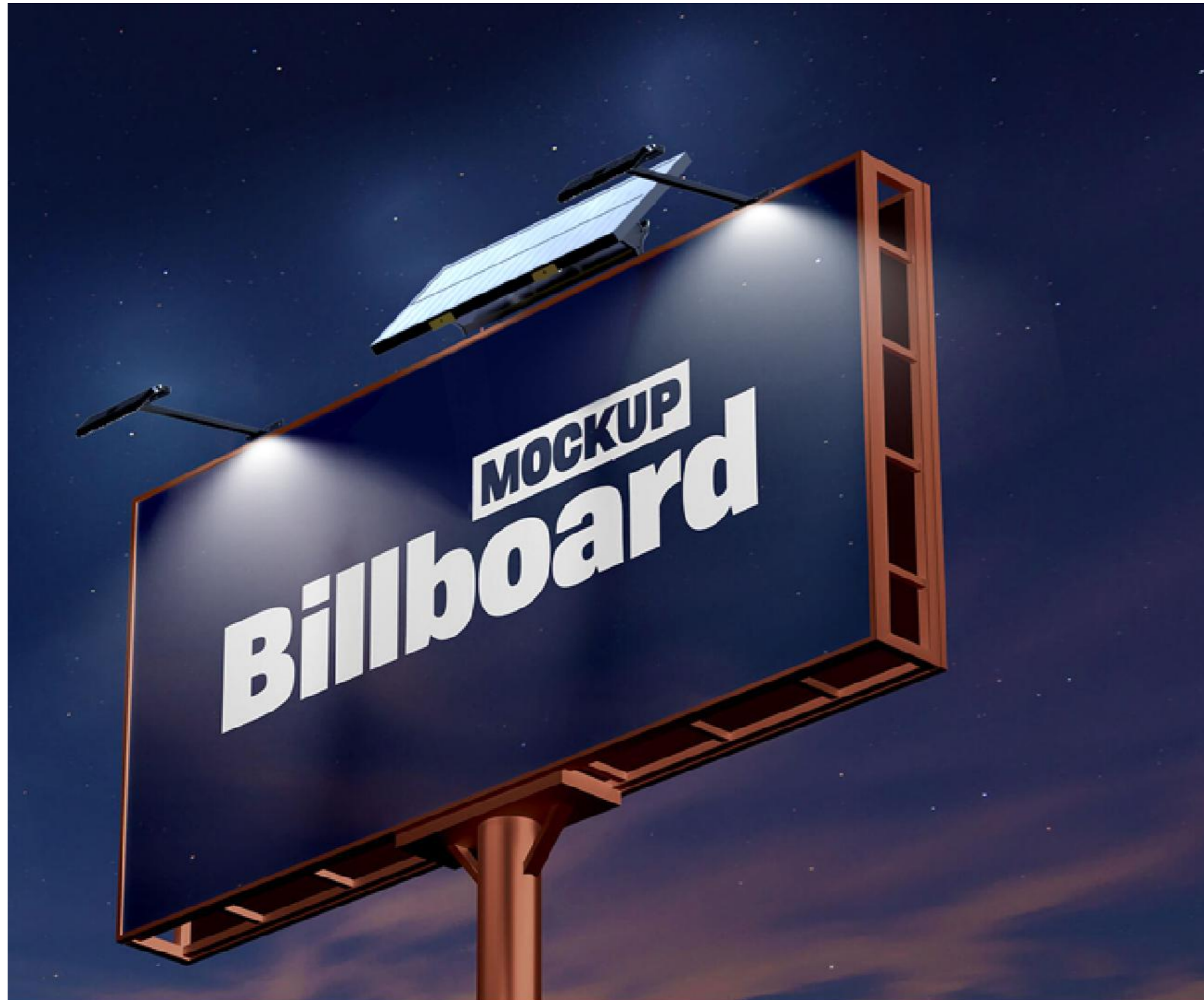
# SSL-05PN3

## SUPER POWER SOLAR ADVERTISING LIGHT

- \* Material: Aluminum Alloy+PC
- \* Monocrystal Silicon Solar Panel
- \* LiFePO4 Battery / Lithium Battery Is Available
- \* 3 Lamps with 502MM Bracket
- \* LCD Battery Display
- \* OEM Lighting Modes



LED power	Color temperature	Irradiation area
90W	3000K / 6000K	100-150m <sup>2</sup>



# SSL-05 POE1 / SSL-05 SUPER POWER POE SERIES SOLAR ADVERTISING LIGHT



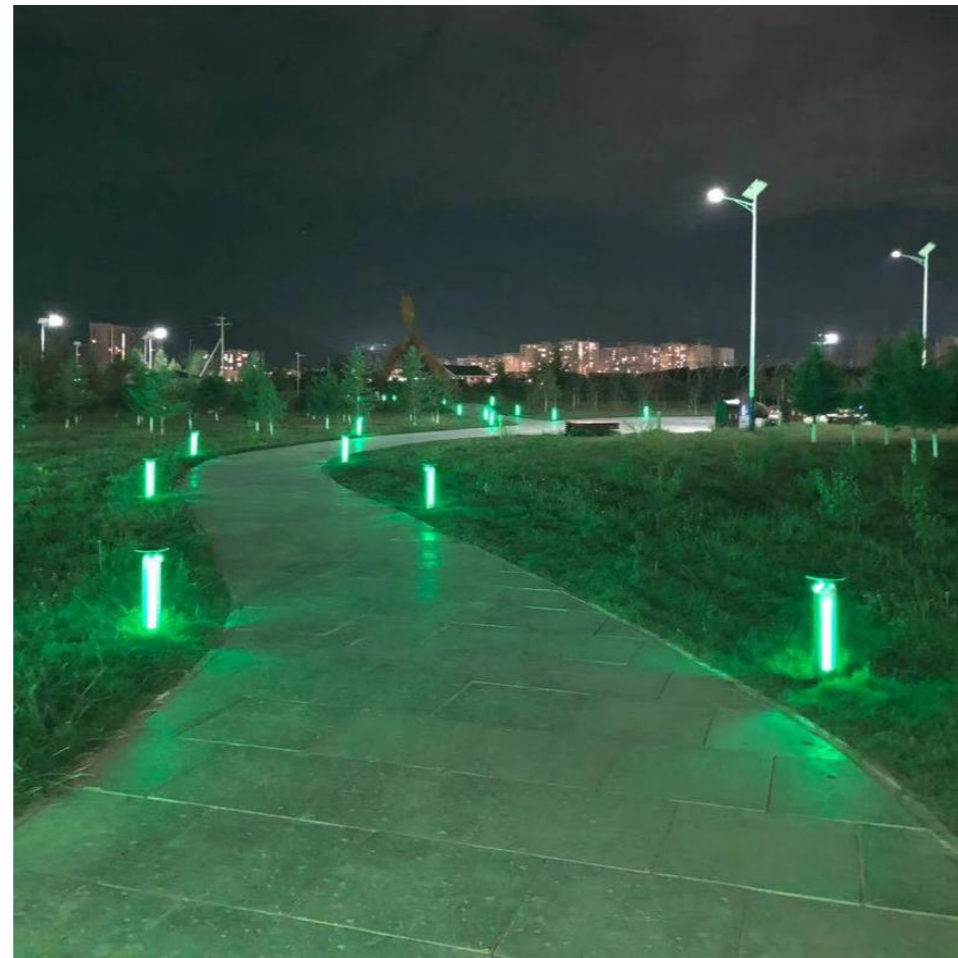
- \* Material: Aluminum Alloy+PC
- \* Monocrystal Silicon Solar Panel
- \* LiFePO4 Battery / Lithium Battery Is Available
- \* 2 Lamps with 502MM Bracket
- \* LCD Battery Display
- \* OEM Lighting Modes



LED power	Color temperature	Irradiation area
60W	3000K / 6000K	100-150m <sup>2</sup>



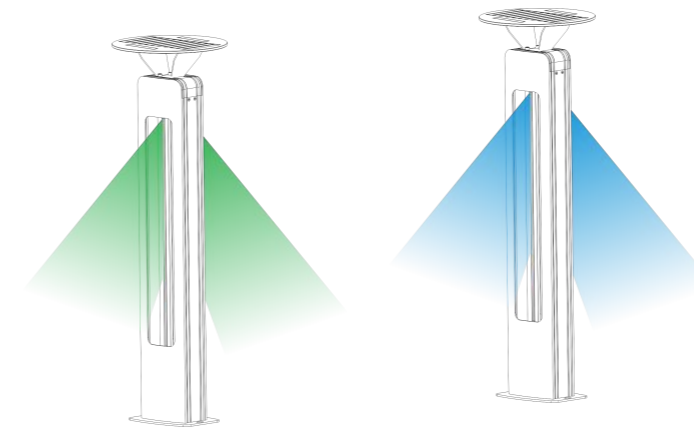
## SOLAR BOLLARD LIGHTS SERIES



# SGL-06 /SGL-06Plus

## SOLAR BOLLARD LIGHT VOICE CONTROL

- \*Material: Aluminum Alloy
- \* Sound Sensor
- \* White +Blue, White +Green, 4000K white
- \* Replaceable Battery
- \* Size : 600mm ,1000mm for choice



EU Patent No.:006951125-0001



LED power	Color temperature	Irradiation area
160lm/w	4000K / 6000K	5-10m <sup>2</sup>





# SGL-08

## DOUBLE -SIDED GLASS SOLAR WALKWAY LED LIGHT

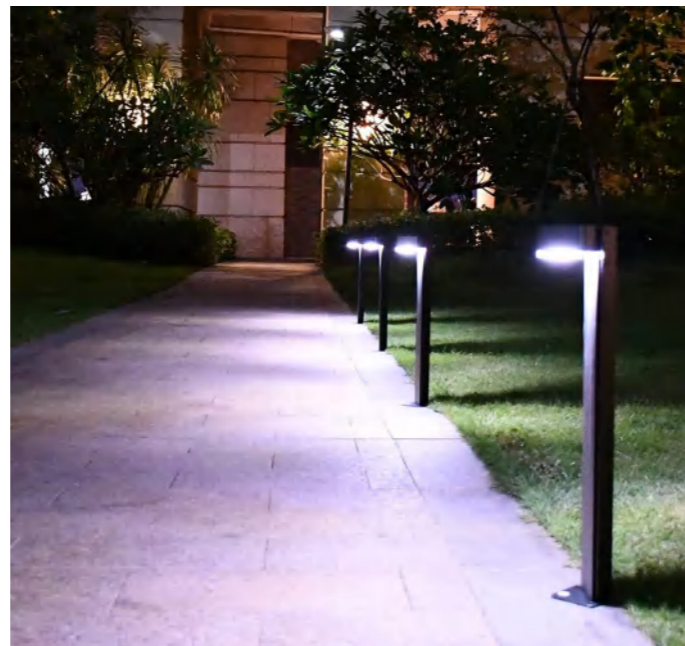
- \* Material: Aluminum Alloy + High Quality PC
- \* 500LM LED Light
- \* LED: 3000K /6000K
- \* High Performance Lithium battery
- \* Constant Lighting All night



Patent No.:ZL 2020 3 0262259.X



LED power	Color temperature	Irradiation area
160lm/w	3000K / 6000K	5-10m <sup>2</sup>



# SGL-09

## ETFE ALUMINUM SOLAR GARDEN LIGHT

- \* COEUS Technology With Long Time Autonomy
- \* Aluminum Alloy Material
- \* ETFE Solar Panel
- \* LED : 3000K /6000K
- \* Two Installation methods -Spike/Screws
- \* Package :1 Pack 2 Pack color box



Method 1: Inserting spikes in the ground  
 Method 2: Fixing on concrete or wooden boards by screws



Patent No.: 2020307181911



LED power	Color temperature	Irradiation area
160lm/w	3000K / 6000K	5-10m <sup>2</sup>



# SGL-11

## Charging Bollard

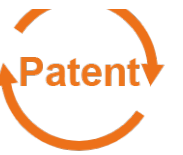
- \*The Charging Bollard features: 2X Three pin socket, All dimensions can be adjusted to requirements.
- \*Aluminum internal chassis ensures long term durability and an adaptability to add additional components at a later date.
- \*An adjustable height gland plate, as standard, allows for easy cable termination when replacing existing product.
- \*Charging station / charging pillar SHL-06 (electromobility) for pedelecs, e-bikes, e-scooters etc. for indoor and outdoor use. The housing and the base plate are made of solid, blasted stainless steel. The device plate is made of stainless steel. The column is pre-wired ready for connection. Further assembly variants or coating in RAL color on request.



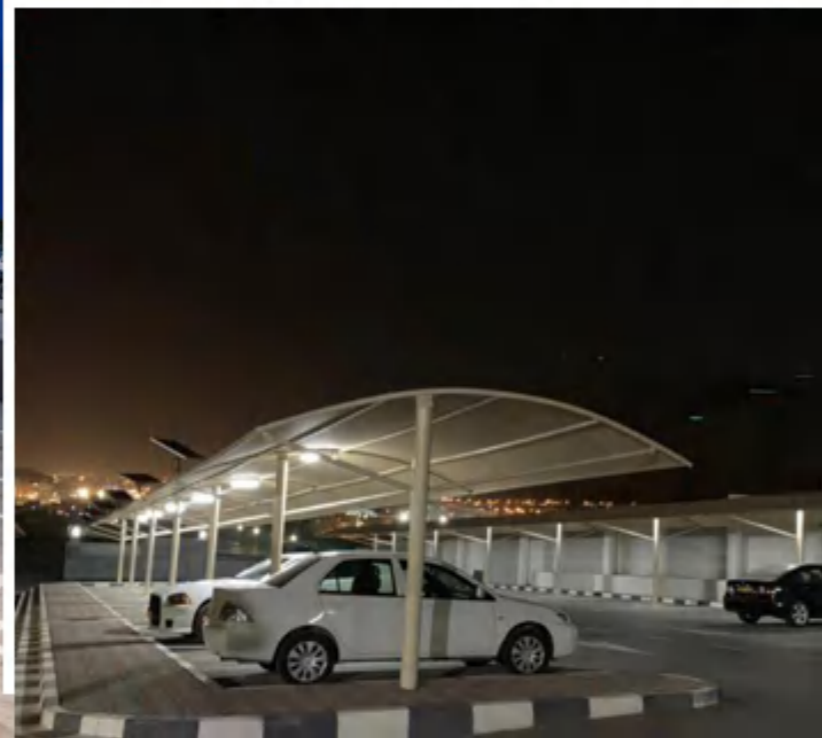
Patent No.: 2020307181911



LED power	Color temperature	Irradiation area
160lm/w	3000K / 6000K	5-10m <sup>2</sup>



## SOLAR WALL LIGHTS SERIES



# SHL-08

## SOLAR CARPORT LIGHT KITS



Built in battery, charge and discharge over 1000 times.  
 The light automatically switches on at dusk and switches off at dawn.  
 2 Lighting modes is available  
 5 M Cable for indoor or outdoor use  
 160 Lumens per watt and IP65 rated.



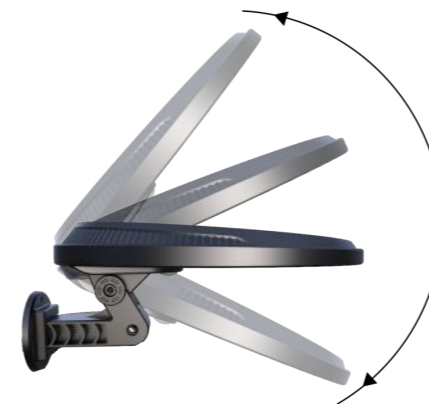
LED power	Color temperature	Irradiation area
160lm/w	3000K / 6000K	30-50m <sup>2</sup>



# SWL-08SP

## SEPARATE 56LEDS ROTATABLE SOLAR LED MOTION WALL LIGHT

- \* External Solar Panel 3W 3M cable
- \* Rotatable bracket
- \* Battery:Li-ion Battery
- \* LED QTY:56 pcs
- \* Wall-mounted / Pole -mounted

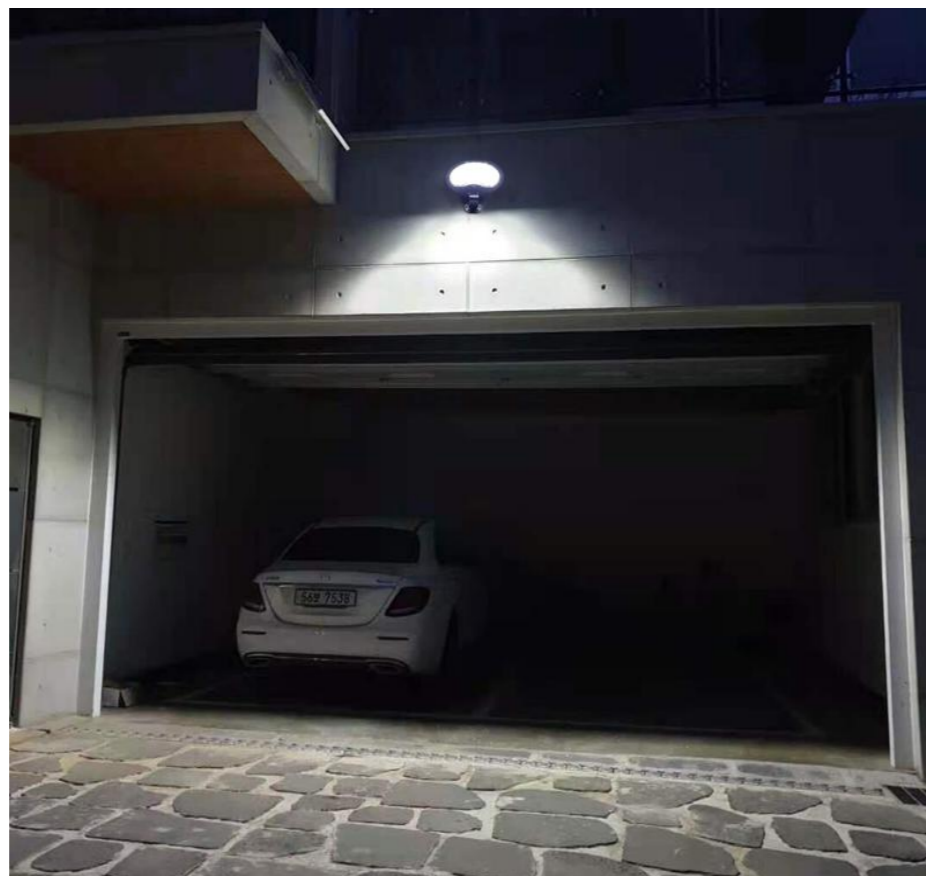


Patent No.: ZL 2014 3 0558603.4



LED power	Color temperature	Irradiation area
160lm/w	3000K / 6000K	30-50m <sup>2</sup>





# SWL-08

## SOLAR WALL LED LIGHT WITH MOTION SENSOR

- \* Rotatable bracket
- \* Battery:Li-ion Battery
- \* LED QTY:56 pcs
- \* Wall-mounted / Pole-mounted
- \* Black / White Body



Patent No.: ZL 2014 3 0558603.4



LED power	Color temperature	Irradiation area
160lm/w	3000K / 6000K	30-40m <sup>2</sup>

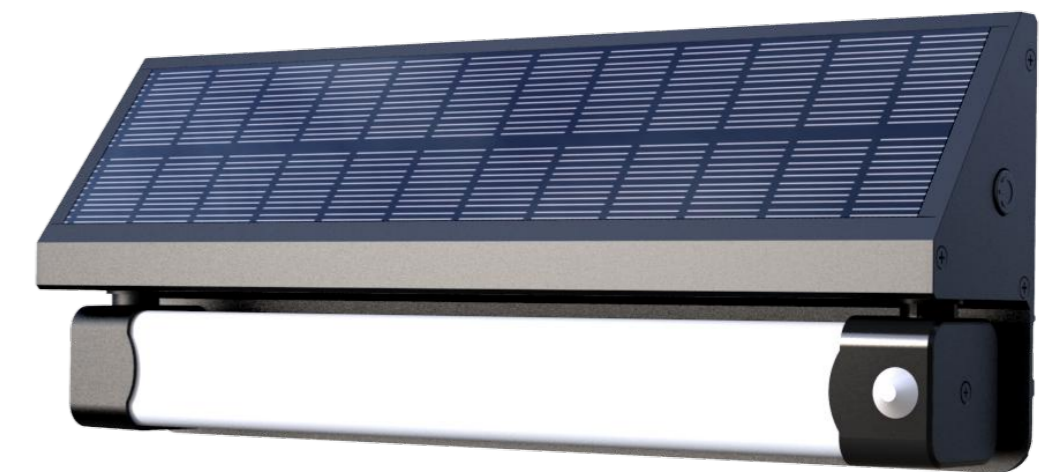


# SWL-12

## TUBE SHAPE SOLAR WALL LIGHT



- \* Material: Aluminum Alloy + High Quality PC
- \* Tilting Solar Panel For Fast Charging
- \* LED: 1000 lumens (3000K and 6000K Dual LED color)
- \* 3 Lighting Modes
- \* Soft Lighting Illumination



LED power	Color temperature	Irradiation area
160lm/w	3000K / 6000K	30-40m <sup>2</sup>



# SFL-SHE10

## SOLAR SECURITY /GARAGE LIGHT WITH CCTV CAMERA

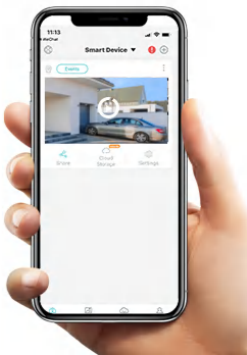
- \* PIR Motion Sensor: Range – 10m
- \* Polycrystalline Solar Panel
- \* 6 Hrs Charging Time
- \* 3 modes of Operation
- \* Camera Features:
  - 3 Mega Pixels
  - 120° viewing angle
  - Internet Protocol (IP) with Wi-Fi
  - Smart Phone Connectivity via APP



Patent No.:ZL 2019 3 0499128.0



LED power	Color temperature	Irradiation area
160lm/w	3000K / 6000K	30-50m <sup>2</sup>





# SFL-10

## SOLAR GARAGE LED LIGHT

- \* Material: ABS + PC
- \* External Solar Panel 5W 3M cable
- \* 1000Lumens Led
- \* Motion Sensor



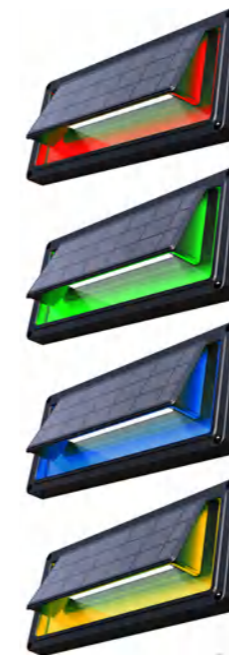
LED power	Color temperature	Irradiation area
160lm/w	3000K / 6000K	30-50m <sup>2</sup>



# SWL-03C

## SOLAR STEP LIGHT FOR FENCE , STAIR,WALL LIGHTING VOICE CONTROL

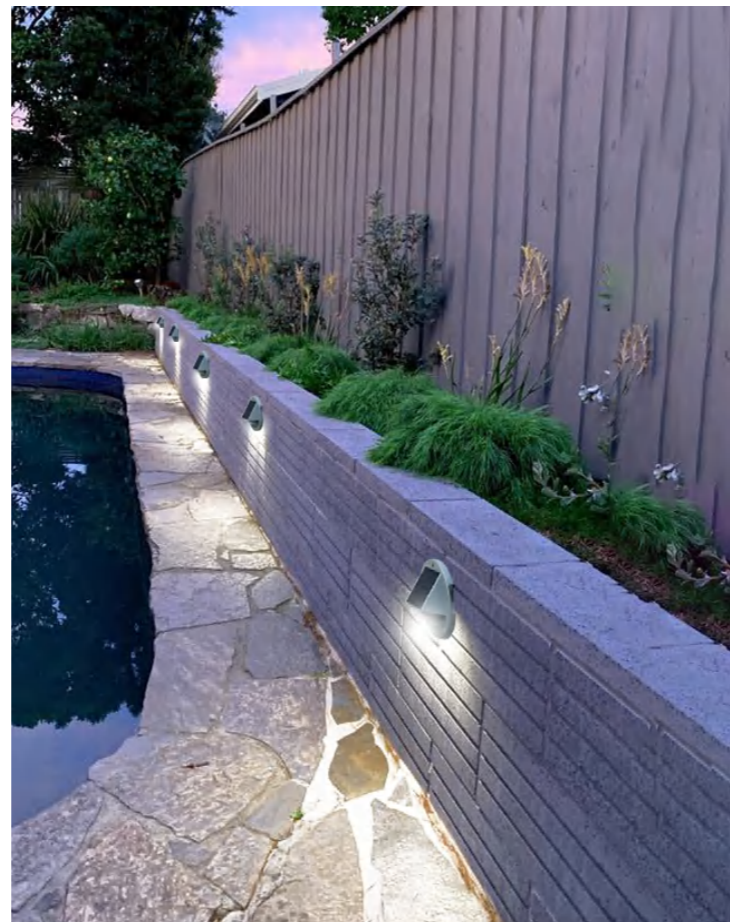
- \*Material: Aluminum Alloy + High Quality PC
- \*LED : White Led + landscape colors
- \*Battery: Li-ion Battery
- \*When Voice detected ,It turn white lighting, if no voice detected , It keep single color



Patent No.: ZL 2016 3 0649678.2



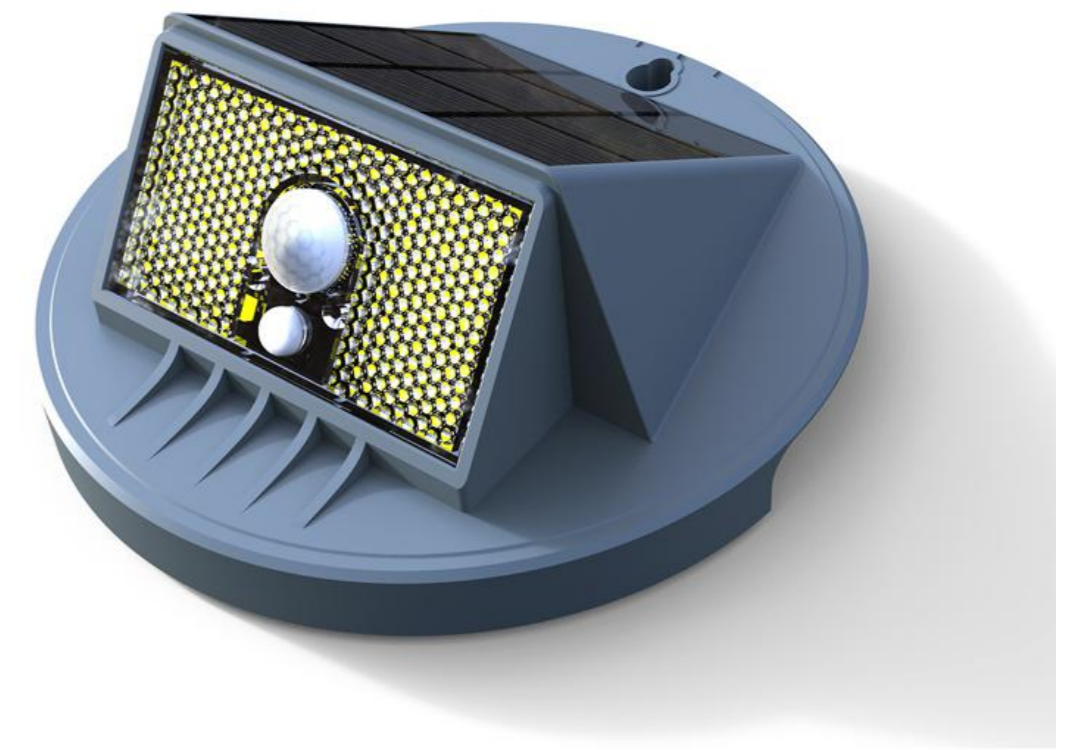
LED power	Color temperature	Irradiation area
160lm/w	3000K / 6000K	5-10m <sup>2</sup>



# SWL-01

## BUTTERFLY WINGS LANDSCAPE LIGHTING SOLAR MINI WALL LIGHT

- \* Material: ABS + PC
- \* High Efficiency Solar Panel
- \* Battery: Li-ion Battery
- \* LED QTY: White Led + Landscape Colors ( Blue/Green/Warm white )
- \* Motion Sensor



LED power	Color temperature	Irradiation area
160lm/w	3000K / 6000K	5-10m <sup>2</sup>



# SHL-04RC SOLAR PENDANT LIGHTS

- \* Material: ABS-Imitation wood grain +PC
- \* Solar panel: 5W
- \* Battery: Lithium-ion Battery
- \* LED: 3000K/6000K
- \* Application : indoor & outdoor Pergola ,Fishing boat, vine frame, terrace, Vegetable tents, livestock farms, beaches etc ,

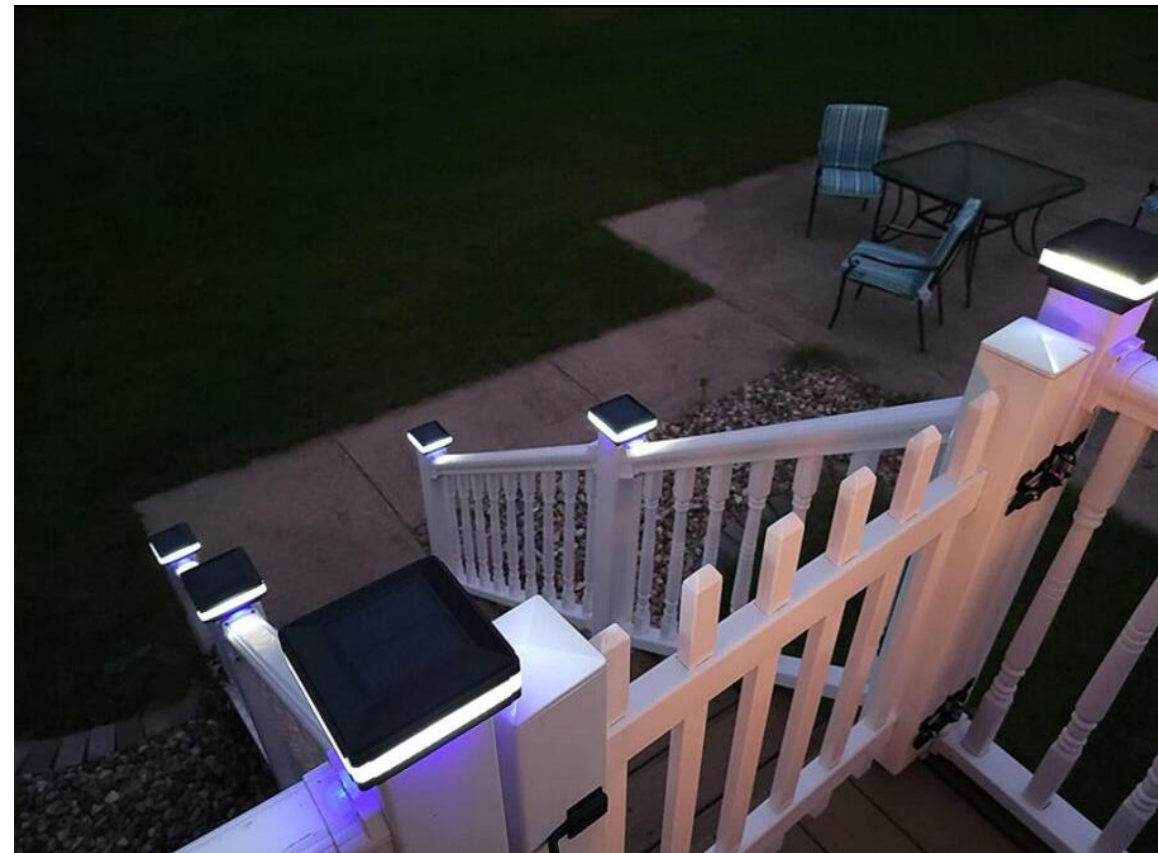


LED power	Color temperature	Irradiation area
160lm/w	3000K / 6000K	30-50m <sup>2</sup>

**SOLAR GARDEN / DECORATIVE LIGHTS SERIES**



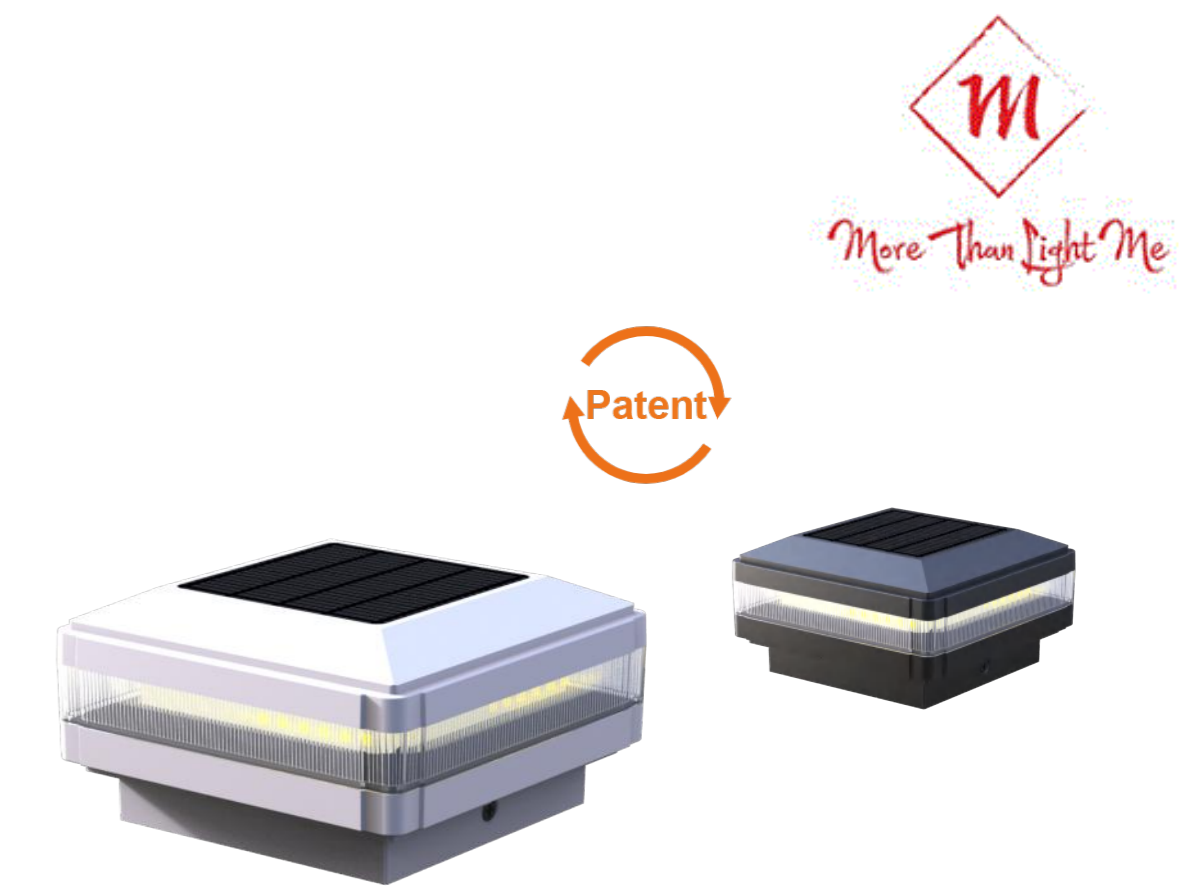
- \* Material: High Quality ABS + PC
- \* Solar panel :1.2W (PET laminated)
- \* Battery: Lithium-ion Battery
- \* LED: White LED /Warm White + Blue /Green Landscape colors
- \* Warranty: 12 months



Patent No.: 2020307373606



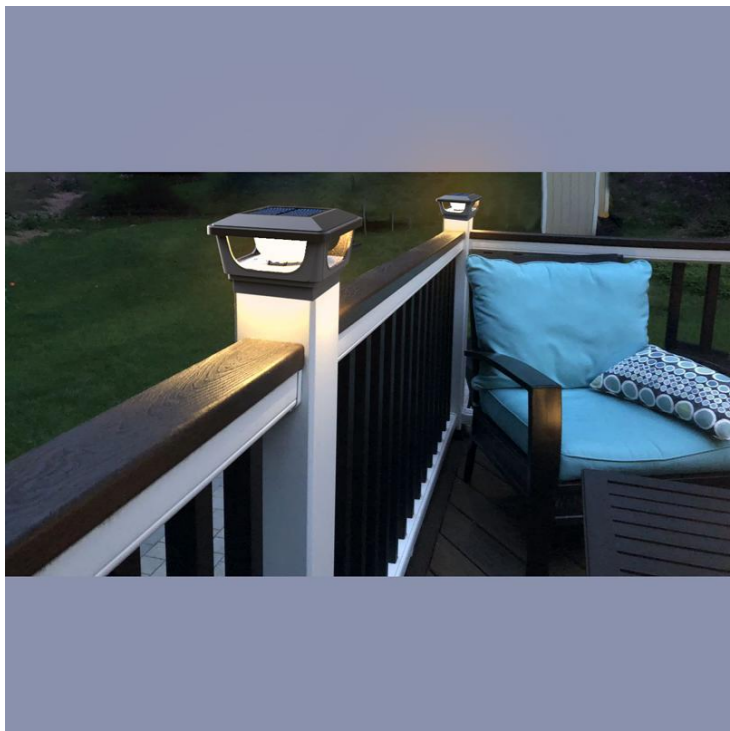
**SGL-03**  
**SOLAR POST CAP LIGHT**  
**WITH LONG TIME**  
**AUTONOMY**





Classic Black

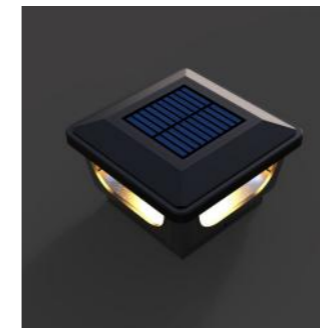
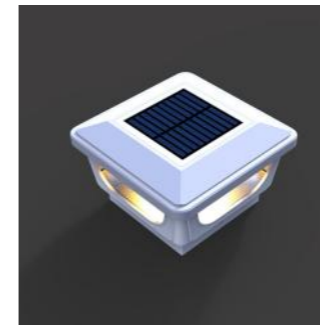
Classic White



# SGL-12

## 3 INCH SOLAR POST CAP LIGHT WITH LONG TIME AUTONOMY

- \* Material: High Quality ABS + PC
- \* Solar panel :0.6W (PET laminated)
- \* Battery: NI-MH Battery
- \* LED: White LED /Warm White
- \* Warranty: 12 months



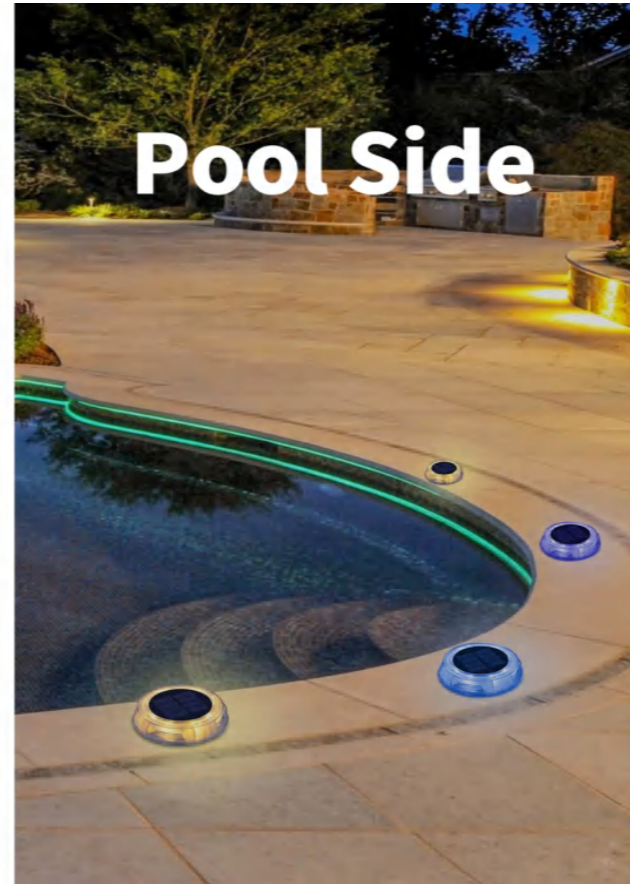
LED power	Color temperature	Irradiation area
160lm/w	3000K / 6000K	5-10m <sup>2</sup>



**Garden**



**Deck**



**Pool Side**

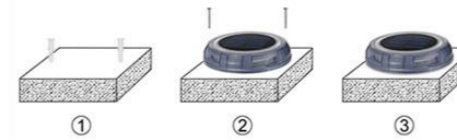
# SGL-01

## SOLAR DECK /LAWN LIGHT IP67

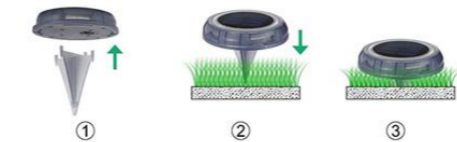
- \* Material: ABS + PC
- \* Solar panel: 0.66W Polycrystalline silicon
- \* Battery: NI-MH Battery
- \* SMD LED: Single Color ( Warm White ,White Led , Green and Blue color for choice
- \* Package : 2 Pack /4 Pack
- \* Warranty: 12 months



Model A:screw fixing



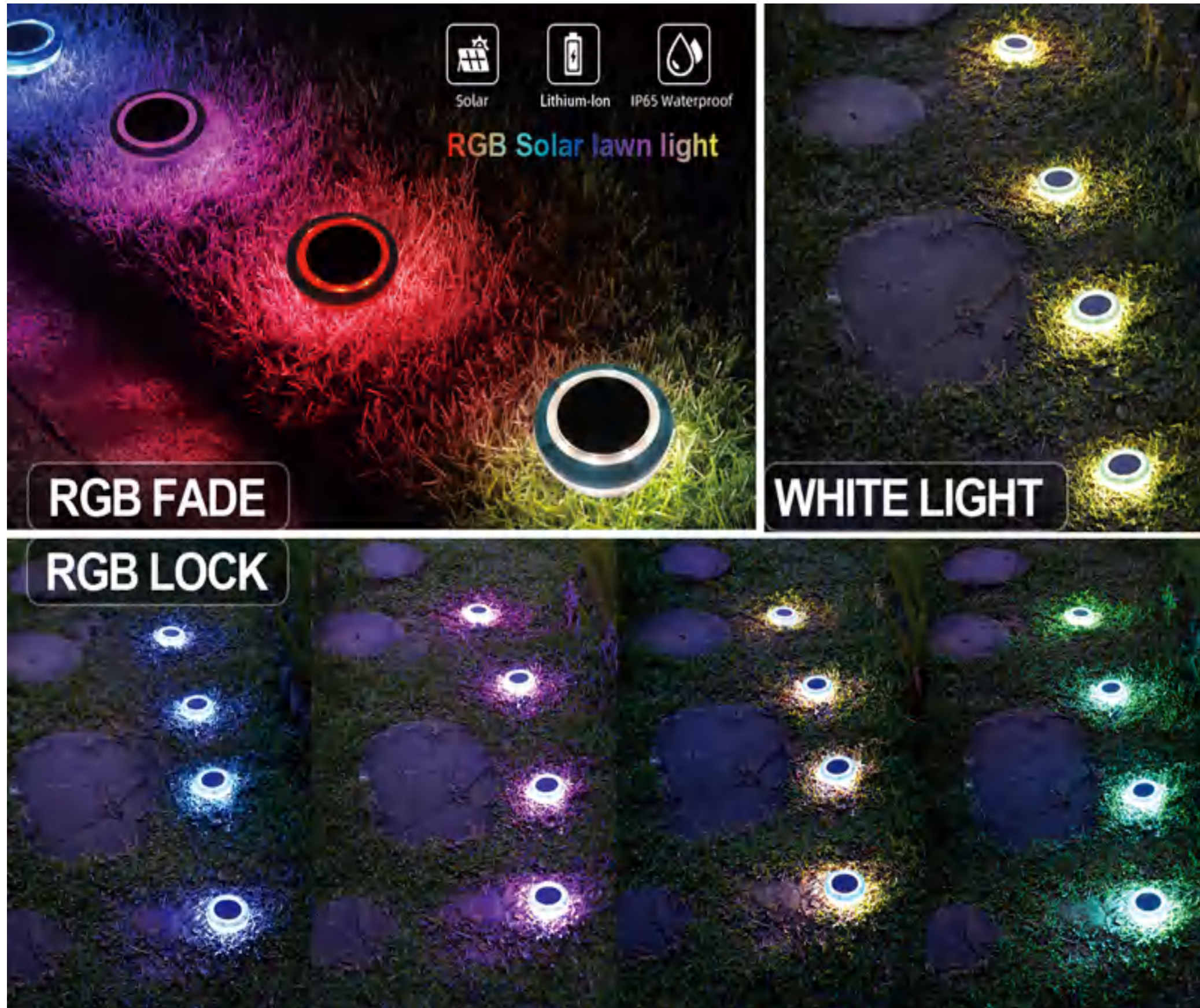
Model B:spike installation



Patent No.:ZL 2019 3 0499088.X



LED power	Color temperature	Irradiation area
160lm/w	3000K / 6000K	5-10m <sup>2</sup>



# SGL-07

## RGBW SOLAR GROUND PLUG-IN LAWN LIGHT



- \* Material: ABS + PC
- \* Solar panel: 0.66W Polycrystalline silicon
- \* Battery: NI-MH Battery
- \* SMD LED: 7 colors and 2 mode manual switchable
- \* Package : 2 Pack /4 Pack
- \* Warranty: 12 months



LED power	Color temperature	Irradiation area
160lm/w	3000K / 6000K	5-10m <sup>2</sup>



Mode 1: Colors Changing



Mode 2 :red



Mode 3 :light green



Mode 4 :green



Shot press the button to swith modes



Mode 5 :sky blue



Mode 6:blue



Mode 7 :purple



Mode 8 :white

# SGL-10

## RGBW JELLYFISH SOLAR FLOWER POT LIGHT

- \* Material: High Quality ABS + PC
- \* Solar Panel: Polycrystalline Silicon (PET laminated)
- \* Battery: NI-MH Battery
- \* Warranty: 12 months
- \* Application: Garden, Lawn, flower pot decoration and growing lighting use



LED power	Color temperature	Irradiation area
160lm/w	3000K / 6000K	10-15m <sup>2</sup>

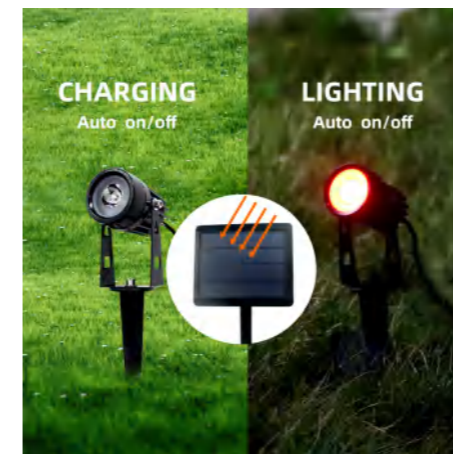




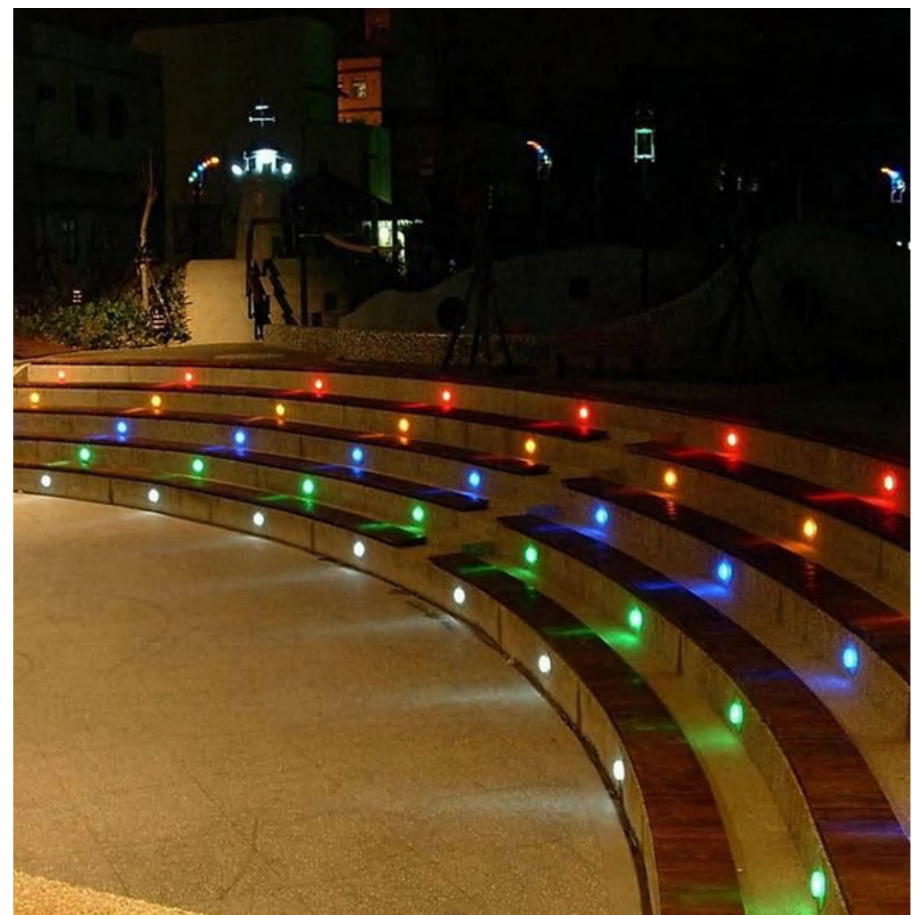
# SGL-04

## COLORFUL SOLAR SPOT LIGHT ALUMINUM CASTING

- \* Material: Aluminum Alloy + High Quality PC
- \* Solar panel: 3W (PET laminated)
- \* Battery: Li-ion Battery
- \* LED QTY: 3 Lamp head ( Green ,Blue, Red)
- \* Warranty: 12 months



LED power	Color temperature	Irradiation area
160lm/w	3000K / 6000K	10-15m <sup>2</sup>



# SGL-02

## DIE CASTING SOLAR GROUND EMBEDDED LIGHT

- \* Material: Aluminum Alloy + High Quality PC
- \* Solar panel: Polycrystalline silicon
- \* Battery: Ni-Mh Battery
- \* LED: Single color White LED /Warm White /Blue / Green
- \* Warranty: 12 months



Automatic light on at night    Can turn off the lights upside down



LED power	Color temperature	Irradiation area
160lm/w	3000K / 6000K	10-15m <sup>2</sup>



# SHL-05F

## SOLAR DANCING FLAME LIGHT FOR TABLE DECORATION

- \* Material: ABS + PC
- \* Solar panel: 0.6W
- \* Battery: Li-ion Battery
- \* LED QTY: 96PCS
- \* 3 Dancing Lighting Modes



LED power	Color temperature	Irradiation area
160lm/w	3000K / 6000K	10-20m <sup>2</sup>





# SHL-04SC

## SOLAR BULB LIGHT WITH USB Charger

- \* Material: ABS + PC
- \* Solar panel: 3W PET Laminated Plate
- \* Battery: Li-ion Battery
- \* LED QTY: 3 Pcs
- \* Warranty: 12 months



Can charge phone and charge by USB



LED power	Color temperature	Irradiation area
160lm/w	3000K / 6000K	20-30m <sup>2</sup>





EBC-04L

Solar candle Mourning lamp



- \* Material: ABS + PC
- \* Solar panel: 0.3W PET Laminated Plate
- \* Battery: Ni-Mh 1000 Battery
- \* LED : White 1piece + Red
- \* Solar charging time: 5hrs
- \* Lighting time :100hrs after fully charged
- \* Waterproof Level: IP65
- \* Applications: Church and Mourning lamp



LED power	Color temperature	Irradiation area
160lm/w	3000K	5-8m <sup>2</sup>

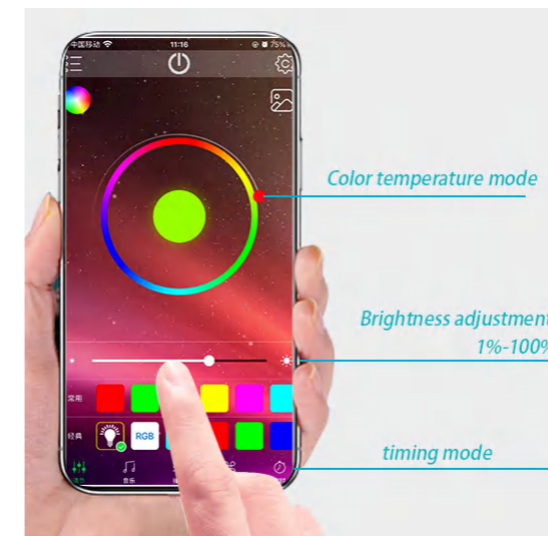
## SOLAR SWIMMING POOL LIGHTS SERIES



# SML-02AI

## AI SMART CONTROL RGBW SOLAR SWIMMING POOL FLOATING LIGHT

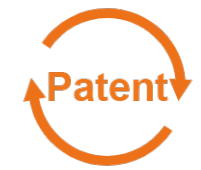
- \* Material: ABS + PC
- \* 3 Nights Long Time Autonomy
- \* Battery: polymer lithium battery
- \* LED: Various lighting mode (RGBW) via App control
- \* Waterproof : IP68
- \* Flicker to the rhythm of the music



Patent No.:ZL 2015 3 0557956.7



LED power	Color temperature	Irradiation area
160lm/w	RGB	5-10m <sup>2</sup>





# SML-01

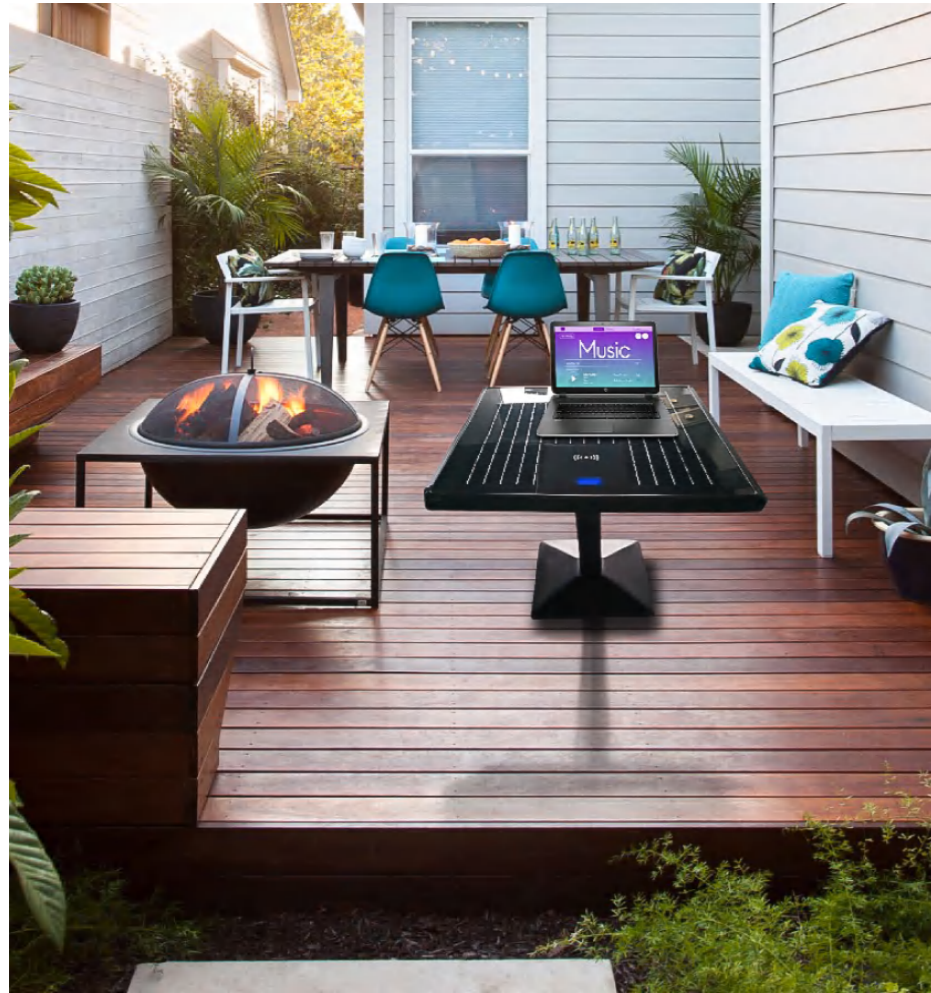
## MINI SOLAR SWIMMING POOL LIGHT IP68

- \* Material: ABS + PC
- \* Solar panel: 0.66W Polycrystalline silicon
- \* Battery: NI-MH Battery
- \* Single Color ( Warm White ,White Led ,Green ,Blue )
- \* Package : 2 Pack /4 Pack
- \* Warranty: 12 months



LED power	Color temperature	Irradiation area
160lm/w	3000K / 6000K	5-10m <sup>2</sup>

**SMART SOLAR SYSTEM SERIES**



# SSL-DL01

## SOLAR CHARGING OR INDOOR CHARGING COFFEE LESUIRE TABLE SYSTEM

- \* Material: Aluminum Alloy
- \* Bluetooth speaker, Wireless charging, USB charging
- \* App control to adjust various colors
- \* Warranty: 3 years
- \* Charged by Solar and DC



Mobile wireless charging



Speaker



Laptop Charging

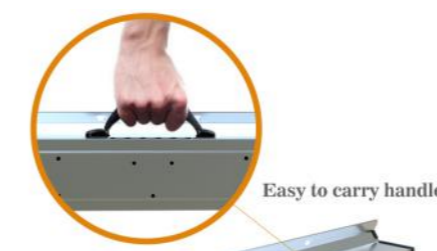




# SSY-POE325/POE625

## SOLAR POWER SUPPLY POE SYSTEM

- \* Material: Aluminum Alloy
- \* Solar cell: Glass laminated solar panel
- \* Battery: Rechargeable Li-ion Battery
- \* Power supply for CCTV Camera, Lighting, light box etc
- \* Warranty: 3 year







# SSY-B300/B500/B600/B1000

## PORTABLE POWER STATION

- \* Multifunctional emergency storage power supply
- \* A variety of charging technologies to meet different needs
- \* Automotive Grade Safety Cells
- \* Meet the needs of daily electrical use
- \* outdoor camping



### HIGH COMPATIBILITY

4 connectors work for most 5V/12V power banks

